

Suspended Banner

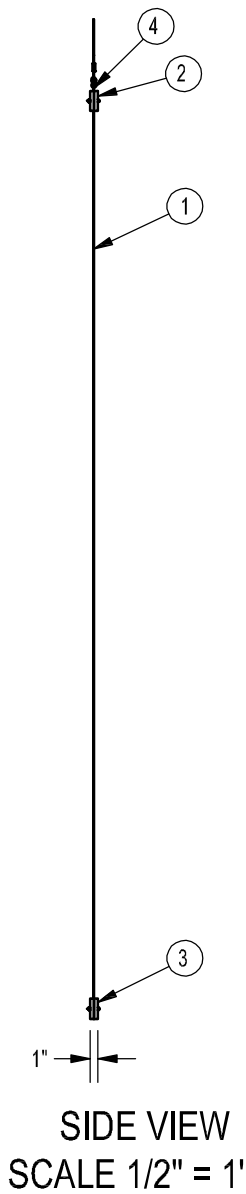
DeCA
Adaptive Uniform Decor Package

Defense Commissary Agency
Lackland AFB, Texas
Fort Lee, Virginia

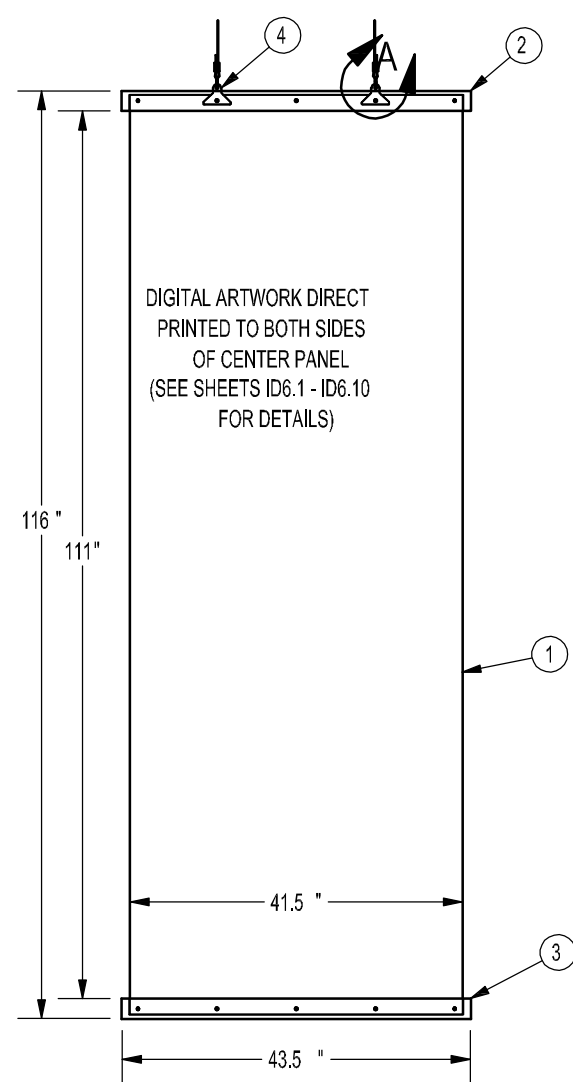


ID6.0A

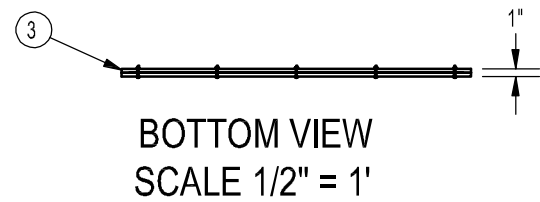
- SUSPENDED BANNER GENERAL NOTES
- 1) CENTER PANEL TO BE .080" WHITE STYRENE® WITH HIGH RESOLUTION SIX COLOR PROCESS DIGITAL ARTWORK DIRECT PRINTED TO PANEL SURFACE WITH UV STABLE INKS. PANEL SHALL BE NOTCHED TO ACCOMMODATE HANGING BRACKET. (SEE SHEET ID6.0B FOR DETAILS)
 - 2) TOP TRIM PIECES TO BE .5" MDF ALL SURFACES OF TOP TRIM FACES TO BE ONE CONTINUOUS PIECE OF .040" BRUSHED ALUMINUM DF-1. REAR FACE OF TOP TRIM TO BE NOTCHED TO ACCOMMODATE CENTER PANEL AND HANGING BRACKET. (SEE SHEET ID6.0B FOR DETAILS)
 - 3) BOTTOM TRIM PIECES TO BE .5" MDF SURFACES OF BOTTOM TRIM PIECES TO BE ONE CONTINUOUS PIECE OF .040" BRUSHED ALUMINUM DF-1. REAR FACE OF BOTTOM TRIM TO BE NOTCHED TO ACCOMMODATE CENTER PANEL. (SEE SHEET ID6.0B FOR DETAILS)
 - 4) HANGING BRACKET TO BE .080" ALUMINUM 5052-H32. BRACKET SHALL BE INSET INTO NOTCH IN CENTER PANEL AND SANDWICHED BETWEEN TOP TRIM PIECES WITH #8-32 UNC X 1.125" BOLTS THROUGH ALL COMPONENTS. (SEE HANGING BRACKET FRONT VIEW)
 - 5) PATTERN SHALL BE IDENTICAL ON BOTH SIDES.
 - 6) BOTTOM OF BANNER TO BE SUSPENDED 9' AFF.



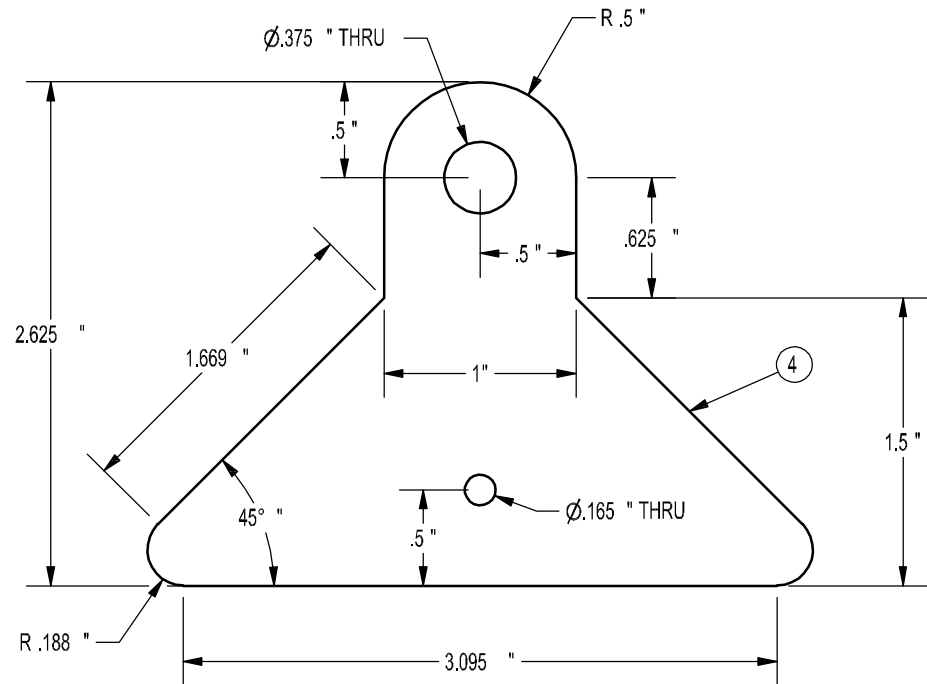
SIDE VIEW
SCALE 1/2" = 1'



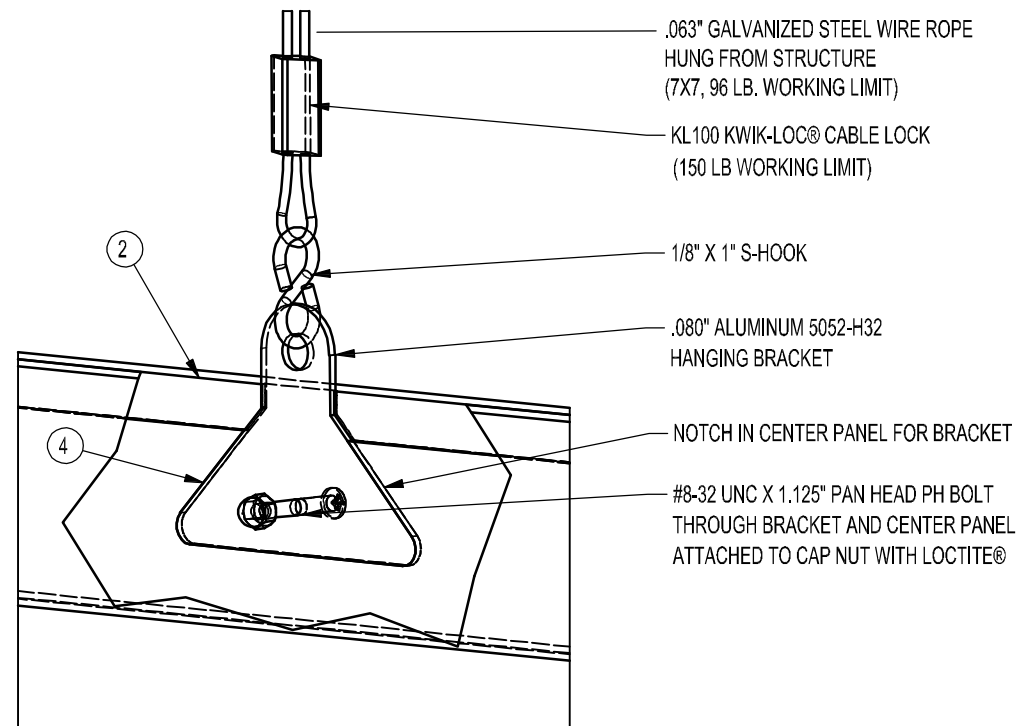
FRONT VIEW
SCALE 1/2" = 1'



BOTTOM VIEW
SCALE 1/2" = 1'



HANGING BRACKET FRONT VIEW
SCALE 1" = 1"



DETAIL A
SCALE 1/2" = 1"